

# L200

## *Cab and Chassis*



## L200 Single Cab and Chassis

### GENERAL SPECIFICATIONS

Overall Length (mm)	4,865
Overall Width (mm)	1,785
Overall Height (mm)	1,655
Wheelbase (mm)	3,000
Tread (Front/Rear) (mm)	1,520/1,515
Min. Ground Clearance (mm)	200
Curb Weight (kg)	1,355
Gross Vehicle Weight (kg)	2,570
Fuel Tank Capacity (L)	75

### PERFORMANCE

Min. Turning Radius (m)	5.7
-------------------------	-----

### ENGINE

Model and Type	2.5-Liter 4 In-Line DOHC 16-Valve Turbocharged and Intercooled DI-Diesel (4D56) Euro 4
Fuel System	Common Rail Electrical Fuel Injection
Max. Power (Ps/rpm)	128 / 4,000
Max. Torque (N-m/rpm)	240 / 1,500~3,500

### TRANSMISSION

Type	5-speed manual
------	----------------

### SUSPENSION

Front	Independent Double Wishbone with Coil Spring (Heavy Duty-Type)
Rear	Rigid Elliptic Leaf Springs with Telescopic Shock Absorbers (Heavy Duty-Type)

### BRAKES

Front	15-inch Ventilated Discs
Rear	10-inch Leading and Trailing Drums

### TIRES AND WHEELS

Tires	195 R15C 8PR 106/104R
Wheels	15 x 6.0 JJ Steel

### STEERING

Gear Type	Rack and Pinion
Power Steering	Equipped
Steering Wheel	3-Spoke Urethane
Tilt Adjustment	Equipped

### AUDIO SYSTEM

Type	Single DIN USB / MP3 / Tuner
Speakers	2
Antenna	Pillar-Mounted

### SAFETY

Front SRS Airbags	Driver	Equipped
	Passenger	Equipped
Seatbelts	3 pt. ELR x2 with Pretensioner, Force Limiter Function, and 2 pt. Lapbelt	

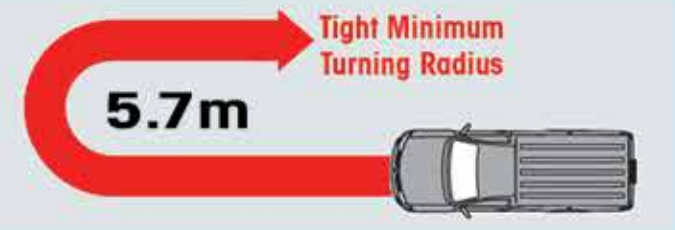
- Mitsubishi Motors Philippines Corporation reserves the right to alter any specification without prior notice.
- Photos shown in this brochure may vary from actual unit.



Aesthetically pleasing and ergonomic dashboard



Red-lit Instrument Meter Cluster



Makes maneuvering through tight spaces easier than ever

## Powerful yet Economical 2.5-L DOHC 16-Valve Turbocharged and Intercooled Di-D engine (4D56)

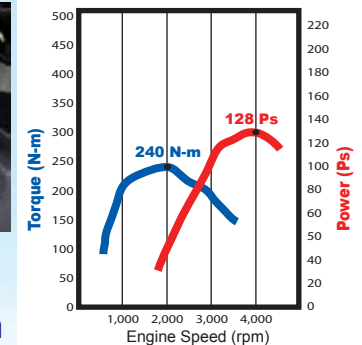


The 2.5-liter Common Rail Direct Injection diesel engine which produces 128 Ps is designed to cope with the demands of a utility vehicle. Aside from being able to produce substantial power and torque, this advanced engine assures better fuel efficiency and reduced emissions.

**Maximum Power** 128 Ps / 4,000  
**Maximum Torque** 240 N-m / 1500~3500 rpm



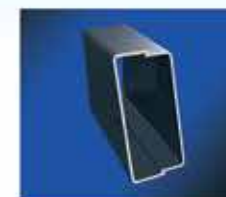
5-speed M/T



15-inch Ventilated Disc Brakes



10-inch leading and Trailing Drums



Thick and Strong Frame Structure



Collision Energy Absorber Joints



Side Impact Beams

**On Quality: We seek excellence in our products and services and recognize that customer satisfaction is the essence of our mission.**